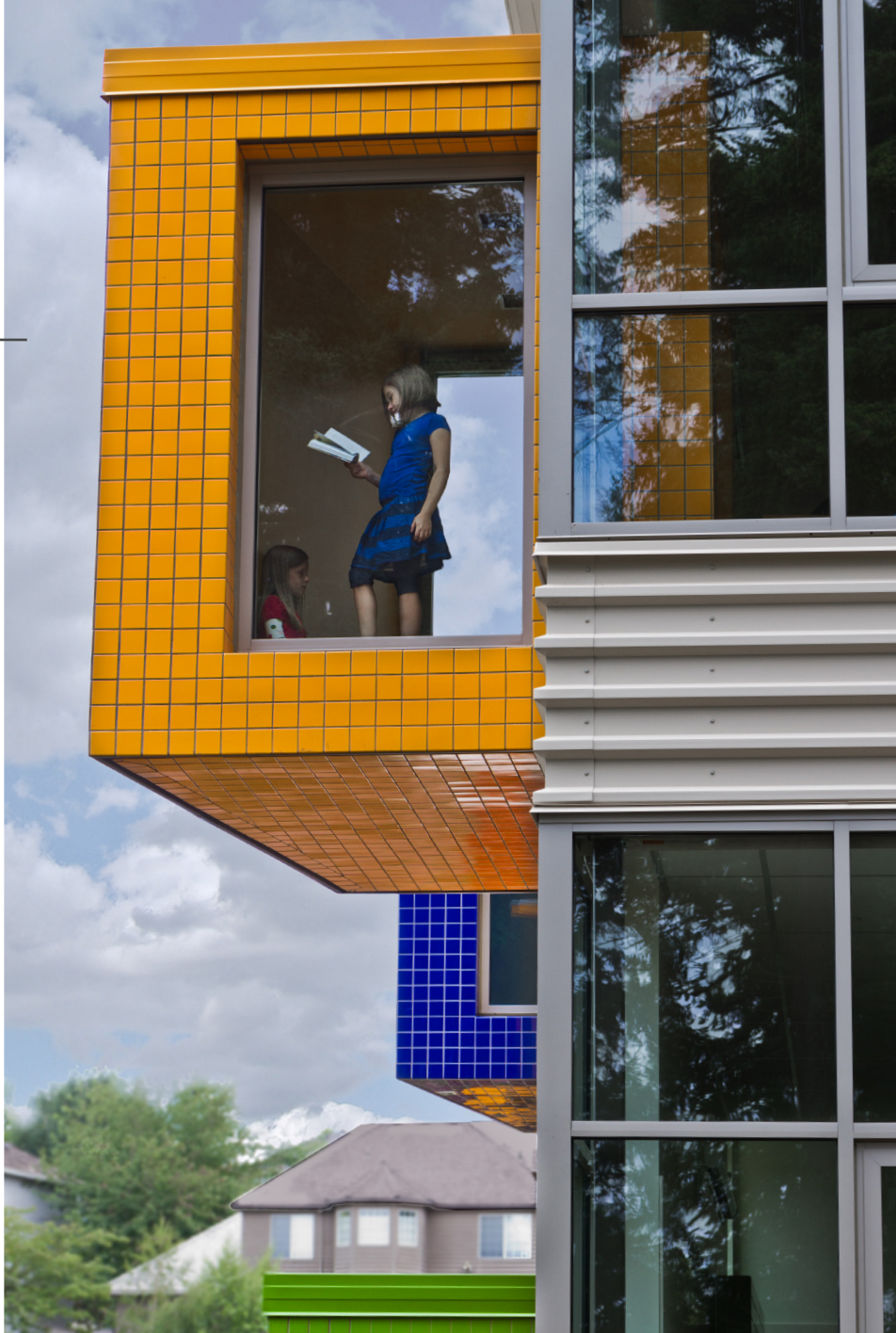


August 2015



**WEST LINN - WILSONVILLE SCHOOL DISTRICT**  
2014 Capital Bond Program  
Quarterly Report

Q2 2015

# TABLE OF CONTENTS

Q2 2015

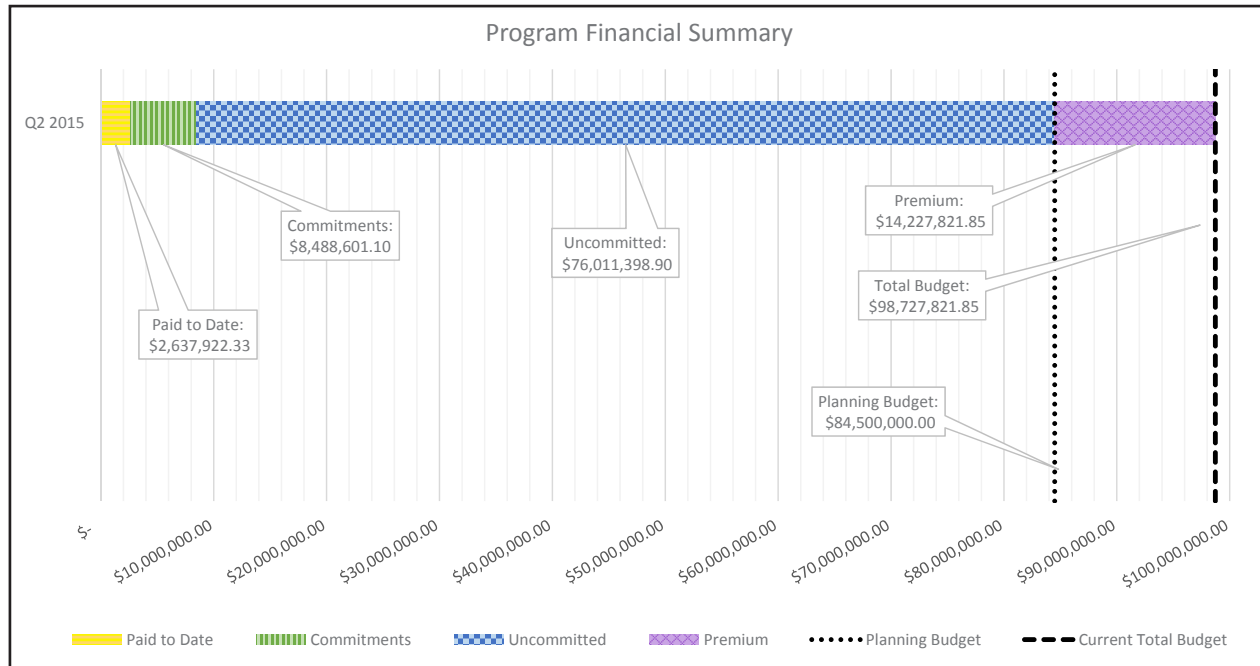


1.	2014 CAPITAL BOND PROGRAM SUMMARY	1
2.	PROJECT STATUS / SCHEDULES	
	WILSONVILLE MIDDLE SCHOOL	2
	SUNSET PRIMARY SCHOOL REPLACEMENT	4
	700 BUILDING RENOVATION & ADDITION @ WLHS	6
	PERFORMING ARTS REMODEL @ WHS	8
3.	LEARNING WITH TECHNOLOGY	10
4.	SAFETY & SECURITY	11
5.	DISTRICT-WIDE IMPROVEMENTS	12



# PROGRAM SUMMARY

Q2 2015



	Original Budget	Approved Budget Changes	Current Budget	Current Commitments	Paid to Date	Estimate At Completion	Forecasted Over/(Under)
New Middle School in Wilsonville	40,000,000.00	0.00	40,000,000.00	3,258,319.89	435,279.56	40,000,000.00	0.00
Sunset Primary School Replacement	24,000,000.00	0.00	24,000,000.00	2,342,658.29	285,570.21	24,000,000.00	0.00
700 Building Renovation & Addition @ WLHS	3,000,000.00	0.00	3,000,000.00	382,328.59	72,405.84	3,000,000.00	0.00
Performing Arts Renovation & Addition @ WHS	3,000,000.00	0.00	3,000,000.00	364,986.85	69,635.14	3,000,000.00	0.00
Technology @ D-W	7,000,000.00	0.00	7,000,000.00	1,413,438.96	1,396,988.96	7,000,000.00	0.00
Safety & Security @ D-W	500,000.00	0.00	500,000.00	155,322.69	54,879.04	500,000.00	0.00
Improvements @ D-W	7,000,000.00	0.00	7,000,000.00	571,545.83	323,163.58	7,000,000.00	0.00
Subtotals	84,500,000.00	0.00	84,500,000.00	8,488,601.10	2,637,922.33	84,500,000.00	0.00
Bond Premium*	14,227,821.85	0.00	14,227,821.85	257,464.42	257,464.42	14,227,821.85	0.00
Grand Totals	98,727,821.85	0.00	98,727,821.85	8,746,065.52	2,895,386.75	98,727,821.85	0.00

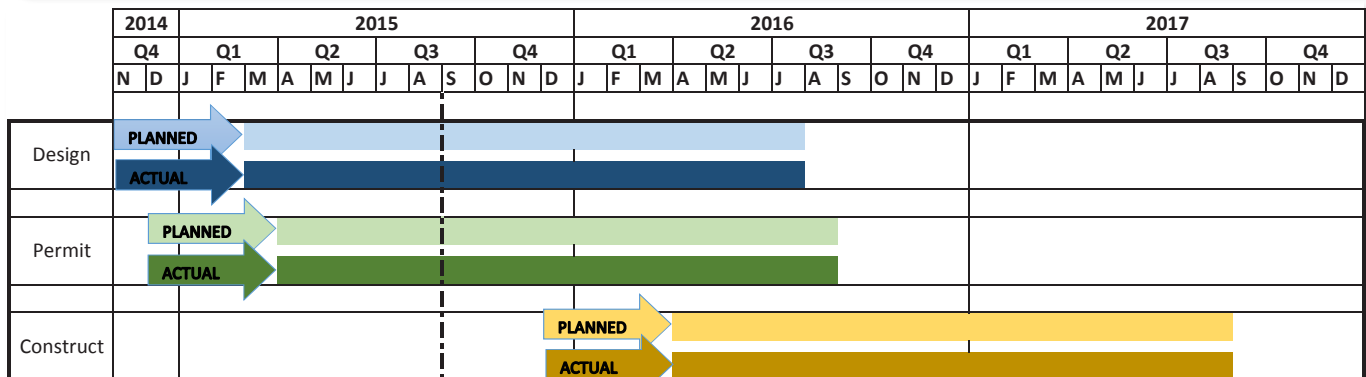
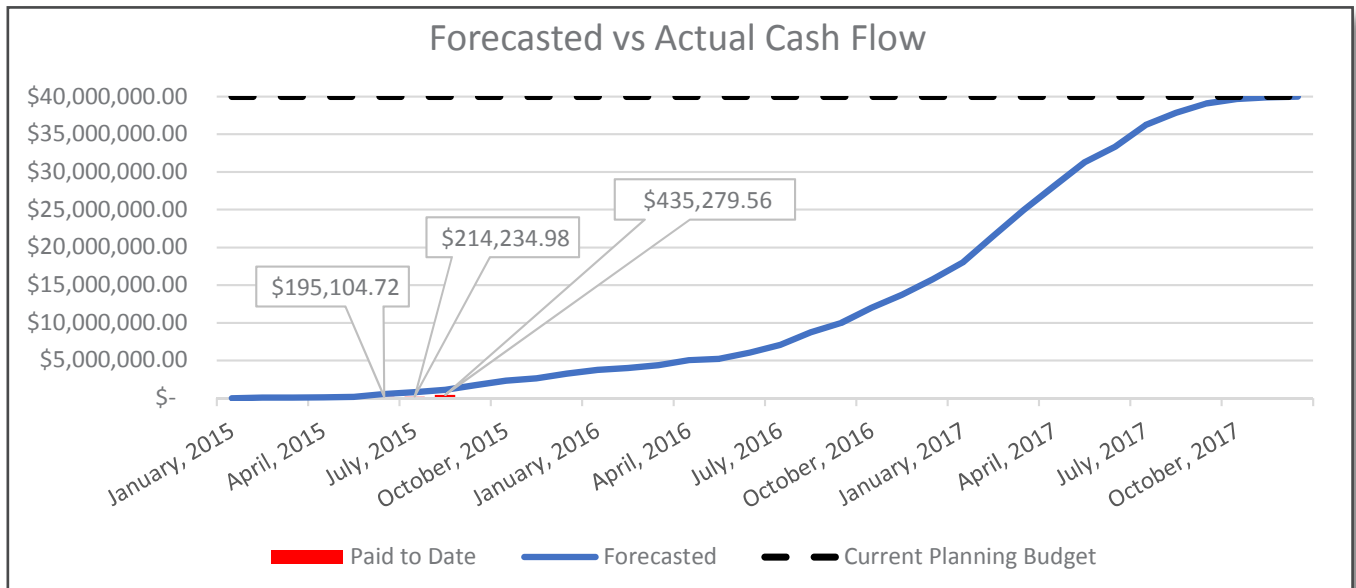
\*Includes \$4,505,000.00 in as-yet unsold bonds

- Voters successfully passed a measure to authorize the school district to sell up to \$84,500,000.00 million dollars of general obligation bonds in November 2014. The School Board authorized the sale of \$79,995,000.00 in general obligation bonds in March of this year. Current market conditions resulted in a premium on bond sales as shown in the bond program premium table above. This premium value includes the as-yet unsold \$4,505,000.00 in bonds already authorized by voters, providing a clear picture of the total funds available to the district for this bond program.
- After the measure was passed the significant task of selecting consultants to help with the bond program began. Formal competitive Requests for Proposals were publicly advertised and processed in compliance with public procurement law. Consultant services needed include program management, architecture, civil engineering, mechanical engineering, electrical engineering, special inspections, landscape architecture, land surveying, traffic engineering and others.
- At the same time the program master budget and schedule were developed. Projects were grouped in ways to create projects that were efficient to bid and construct, and scheduled according to urgency of the improvements.
- The School Board assigned bond oversight responsibilities to the Long Range Planning Committee, with a specific list of goals. The Bond Oversight Committee met in April and July, David Lake was elected chair, and Gretchen Katko elected vice-chair.



## NEW MIDDLE SCHOOL IN WILSONVILLE

### Q2 2015



#### Recent Activities:

- Educational Specifications are complete and the project has moved into schematic design
- Stage 1 planning process with the City of Wilsonville, including a comprehensive plan amendment, zone change and annexation is complete after unanimous approval by City Council in August, the appeal period for this decision ends September 6

#### Upcoming Activities:

- The District will begin conversations with the City of Wilsonville to propose a development agreement for the required right of way improvements along Advance Road including two new public roadways within the project site
- Schematic design and first detailed cost estimates are scheduled for completion in October
- Stage 2 land use application with the City of Wilsonville will begin in November



# NEW MIDDLE SCHOOL IN WILSONVILLE

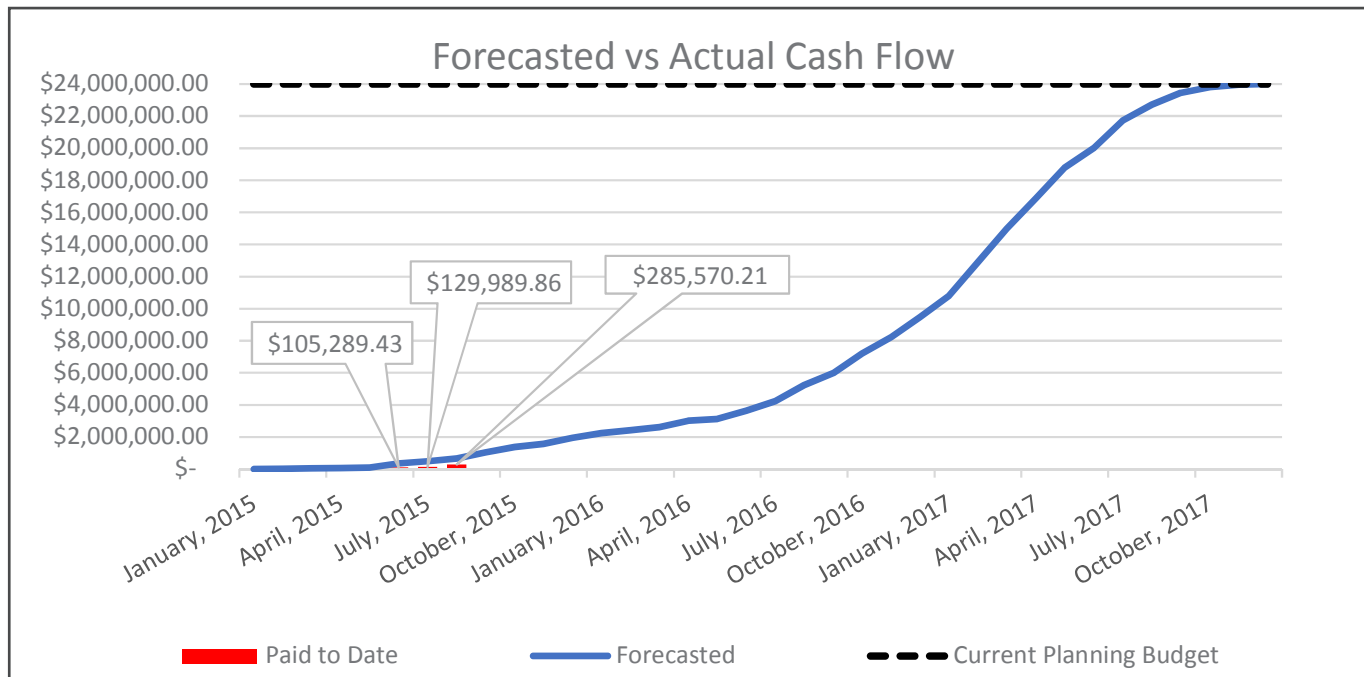
Q2 2015

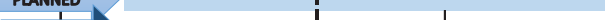





## DESIGN CONCEPT



# SUNSET PRIMARY SCHOOL REPLACEMENT

## Q2 2015



	2014		2015												2016												2017																							
	Q4		Q1				Q2				Q3				Q4				Q1				Q2				Q3				Q4				Q1				Q2				Q3				Q4			
	N	D	J	F	M	A	M	J	J	A	S	O	N	D	J	F	M	A	M	J	J	A	S	O	N	D	J	F	M	A	M	J	J	A	S	O	N	D												
Design																																																		
																																																		
Permit																																																		
																																																		
Construct																																																		
																																																		

### Recent Activities:

- Educational Specifications are complete and the project has moved into schematic design
- Neighbors were invited to provide input on the conceptual design at an informal meeting in August, the meeting was well attended
- Geotechnical studies were performed across the site to verify subsurface conditions
- Full metes and bounds survey of the property is complete.

### Upcoming Activities:

- The project team will meet with the Sunset Neighborhood Association in September
- Schematic Design and first detailed cost estimate are scheduled for completion in October
- The design will be submitted for land use with the City of West Linn in October

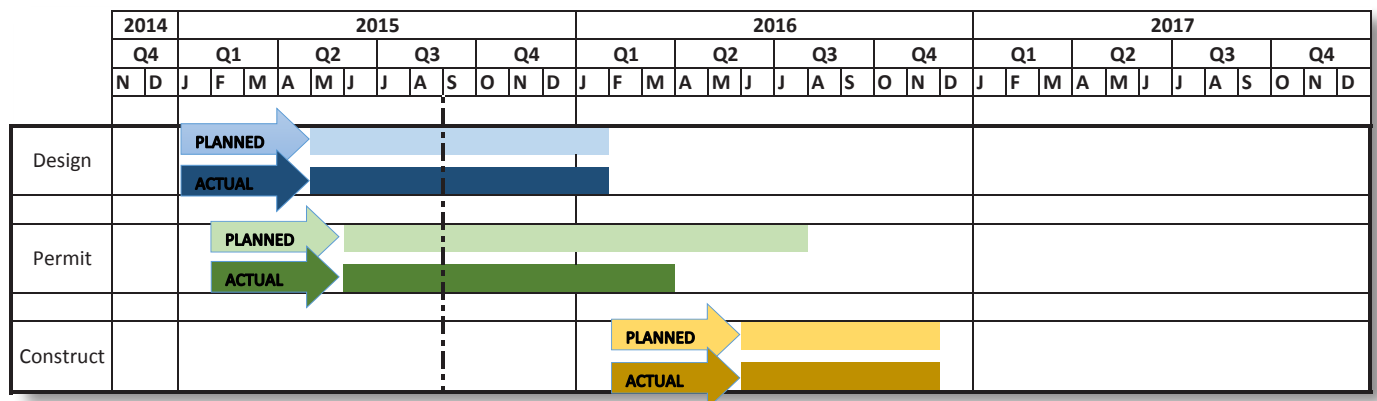
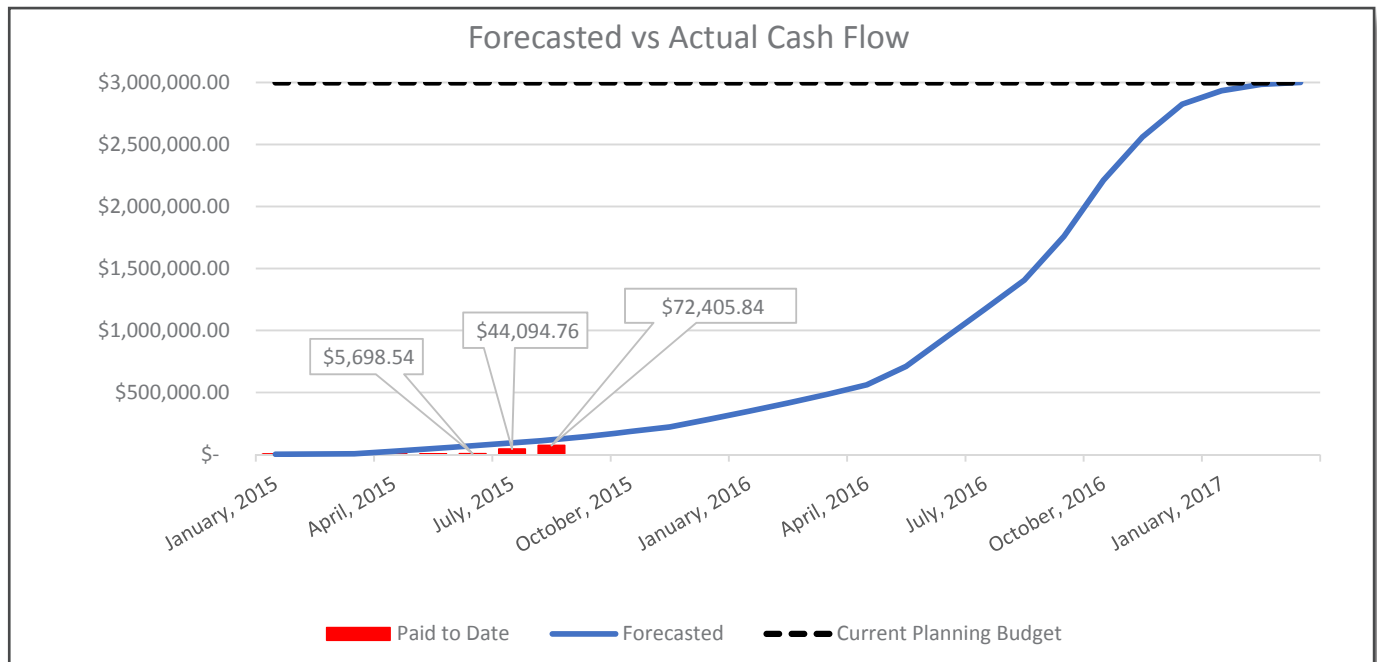






## 700 BUILDING RENOVATION & ADDITION AT WLHS

### Q2 2015



#### Recent Activities:

- The educational specifications are complete and the schematic design drawings are currently being reviewed by the Bond Management Team
- The schematic design estimate draft is currently being reviewed by the Bond Management Team

#### Upcoming Activities:

- The project will be submitted to the City of West Linn for land use review in October
- The design document phase of design will be complete in November

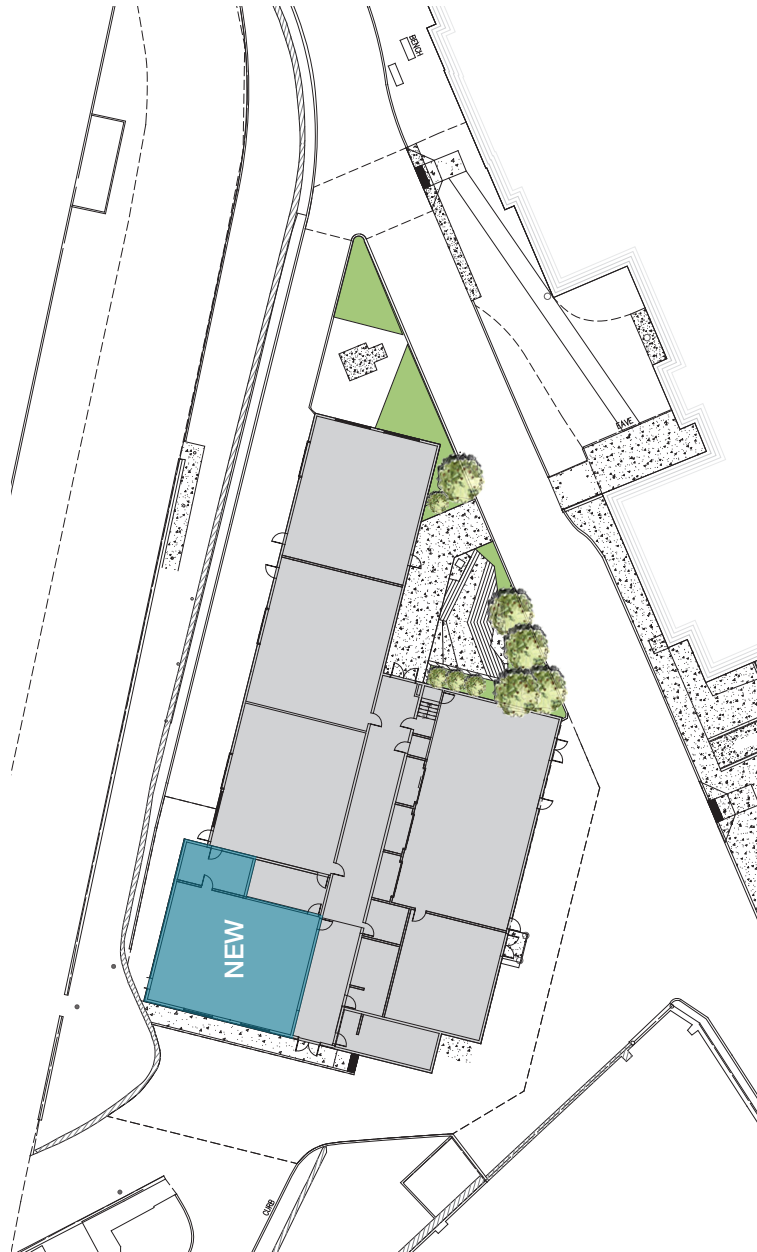




# 700 BUILDING RENOVATION & ADDITION AT WLHS

Q2 2015

## DESIGN CONCEPT



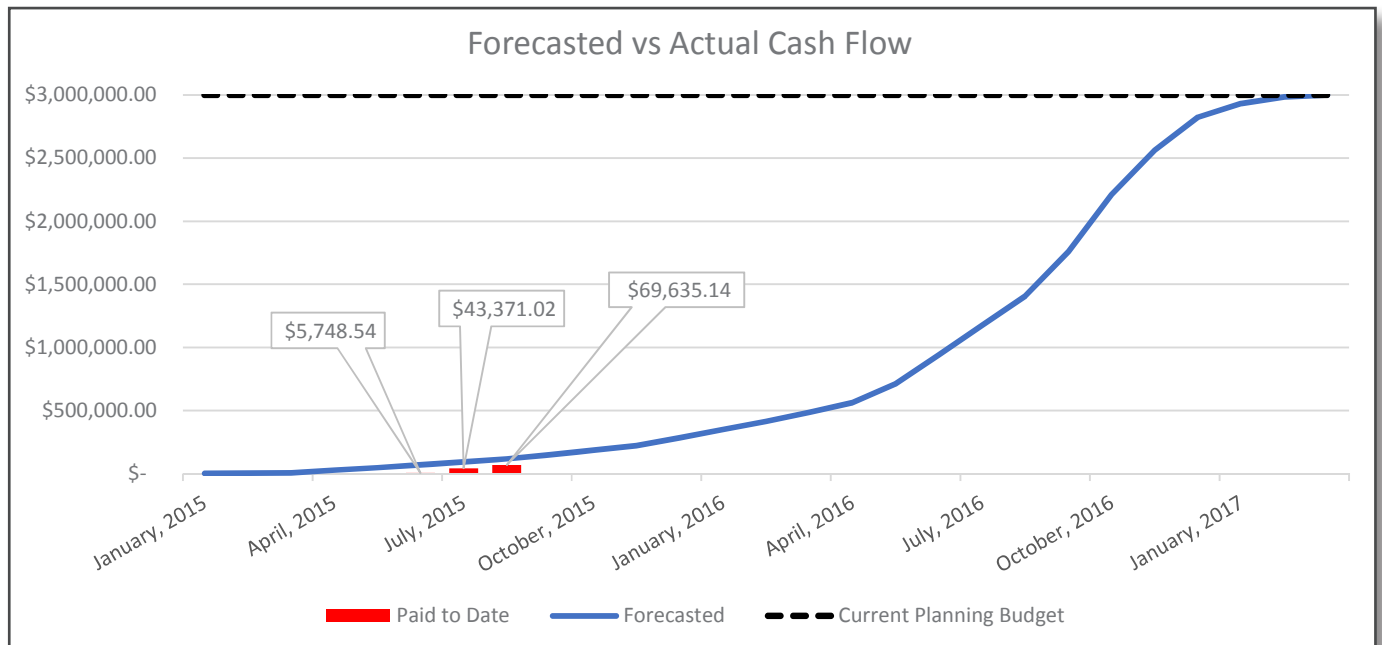
SITE PLAN  
NOT TO SCALE

WEST LINN HIGH SCHOOL | West Linn-Wilsonville School District

AUG 27, 2015

## PERFORMING ARTS RENOVATION & ADDITION @ WHS

### Q2 2015



	2014		2015												2016												2017																																																																																																																																																																																																																																																																																																																																																																																																																																																																																																																																																																																																																																																																																																																																																																																																																																																																																																																																																																																																																																																																																																																																																																																																																																																																																																																							
	Q4		Q1			Q2			Q3			Q4			Q1			Q2			Q3			Q4			Q1			Q2			Q3			Q4																																																																																																																																																																																																																																																																																																																																																																																																																																																																																																																																																																																																																																																																																																																																																																																																																																																																																																																																																																																																																																																																																																																																																																																																																																																																																																														
	N	D	J	F	M	A	M	J	J	A	S	O	N	D	J	F	M	A	M	J	J	A	S	O	N	D	J	F	M	A	M	J	J	A	S	O	N	D																																																																																																																																																																																																																																																																																																																																																																																																																																																																																																																																																																																																																																																																																																																																																																																																																																																																																																																																																																																																																																																																																																																																																																																																																																																																																																												
Design			<div><div>PLANNED</div><div>ACTUAL</div></div>																																																																																																																																																																																																																																																																																																																																																																																																																																																																																																																																																																																																																																																																																																																																																																																																																																																																																																																																																																																																																																																																																																																																																																																																																																																																																																																																															</

#### Recent Activities:

- The educational specifications are complete and the schematic design drawings are currently being reviewed by the Bond Management Team
- The schematic design estimate draft is currently being reviewed by the Bond Management Team

#### Upcoming Activities:

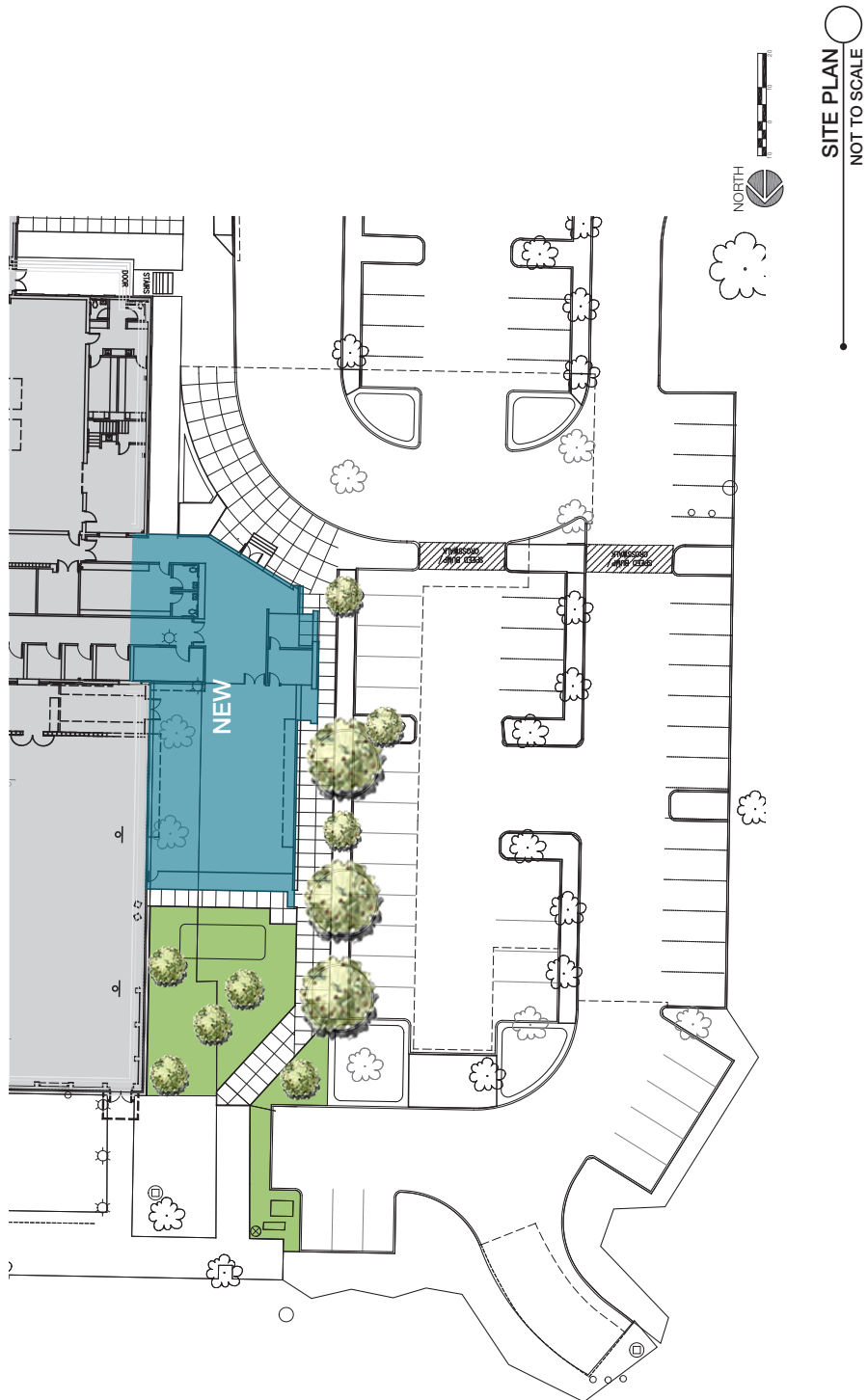
- The project will be submitted to the City of Wilsonville for land use in October
- The design document phase of design will be complete in November



# PERFORMING ARTS RENOVATION & ADDITION @ WHS

Q2 2015

## DESIGN CONCEPT



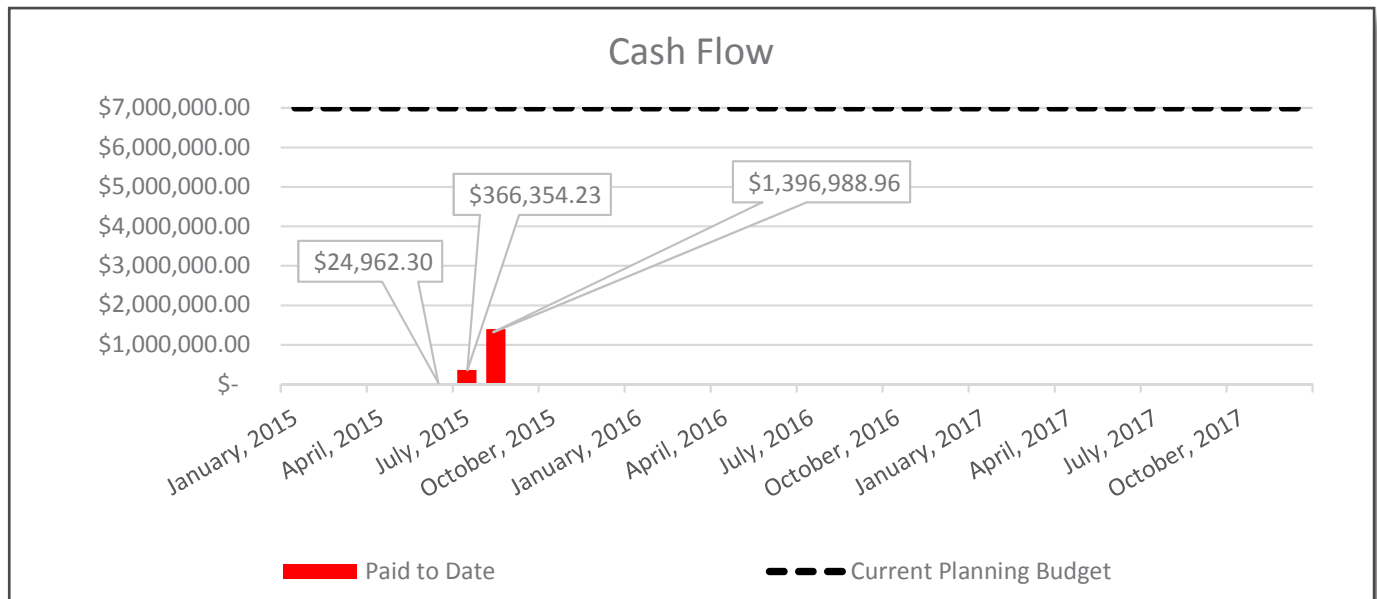
WILSONVILLE HIGH SCHOOL | West Linn-Wilsonville School District

AUG 27, 2015



## LEARNING WITH TECHNOLOGY

Q2 2015



The West Linn-Wilsonville School District has a strong history of creating and implementing a dynamic and comprehensive technology plan that supports the district's technology systems and networks, efficient work environments, innovative and effective instructional practices, and trends in Science, Technology, Engineering & Mathematics (STEM) education (including increasingly robust robotics and engineering programs). Specific areas of upgrades that have been identified are:

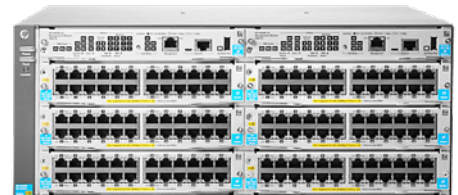
- WiFi Upgrades
- Circuit Upgrades
- Dark Fiber
- User Devices
- Teacher Presentation Systems
- Server Updates/Upgrades
- Office Computer Systems
- Network Upgrades
- Intercoms

### Recent Activities:

- WAN Updates
- New Router, New Firewall, and Electronics Updates
- Wifi Updates
- Server Environment Updates
- Student Device Updates
- Teaching Station Updates
- Select Intercom Enhancements
- Select Clock System Replacements
- Planning Discussions for Future Updates

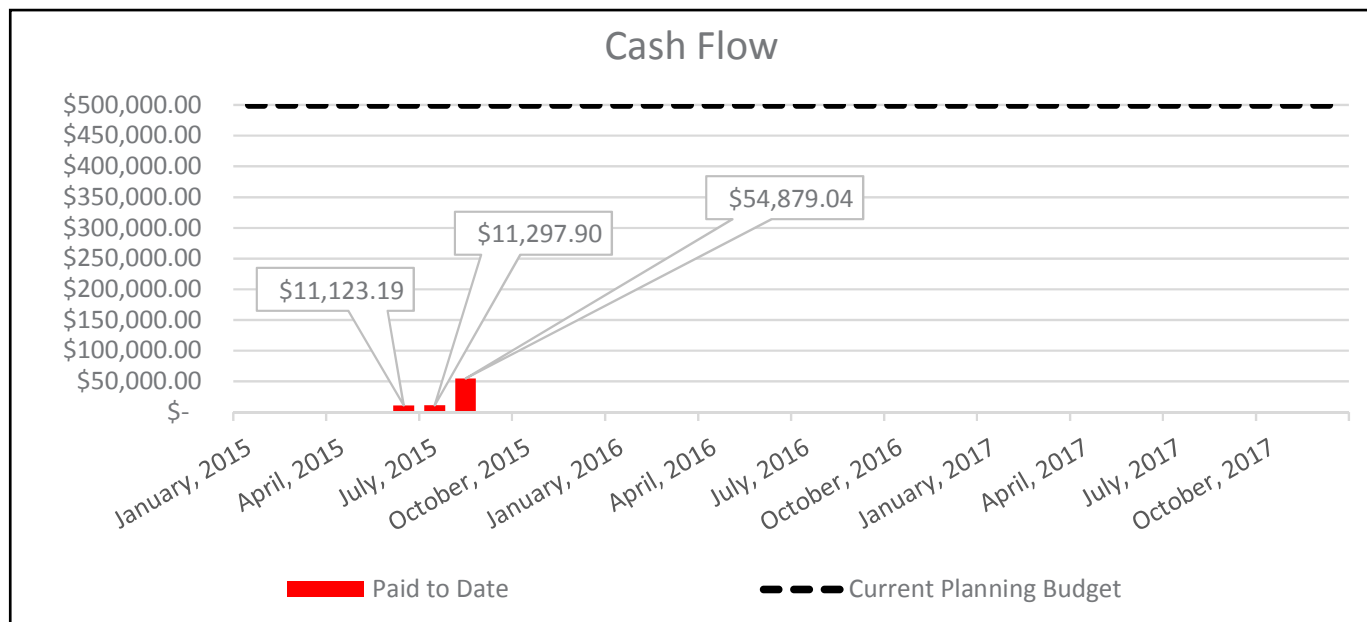
### Upcoming Activities:

- WAN Updates
- Wifi Updates
- Student Device Updates
- Teaching Station Updates
- Planning Discussions for Future Updates



# SAFETY & SECURITY

Q2 2015



West Linn-Wilsonville School District is committed to creating and maintaining safe, secure facilities for students, staff and patrons as a partnership with our community, neighboring school districts, area law enforcement and emergency responders. Our schools have been assessed for safety related corrections and as identified the following specific improvements for each unique school facility.

- Building Communication Systems
- School Entrance Security
- Door Hardware and Locking
- Safe Classroom Accommodations
- School-grounds Exterior Security Measures
- Limited Video Surveillance
- Lighting and Controls

#### Recent Activities:

- Selection of Elert & Associates as a Safety & Security Consultant
- Building communication system enhancements at several schools
- Coordination with safety and security consultant for site visits the last week of September

#### Upcoming Activities:

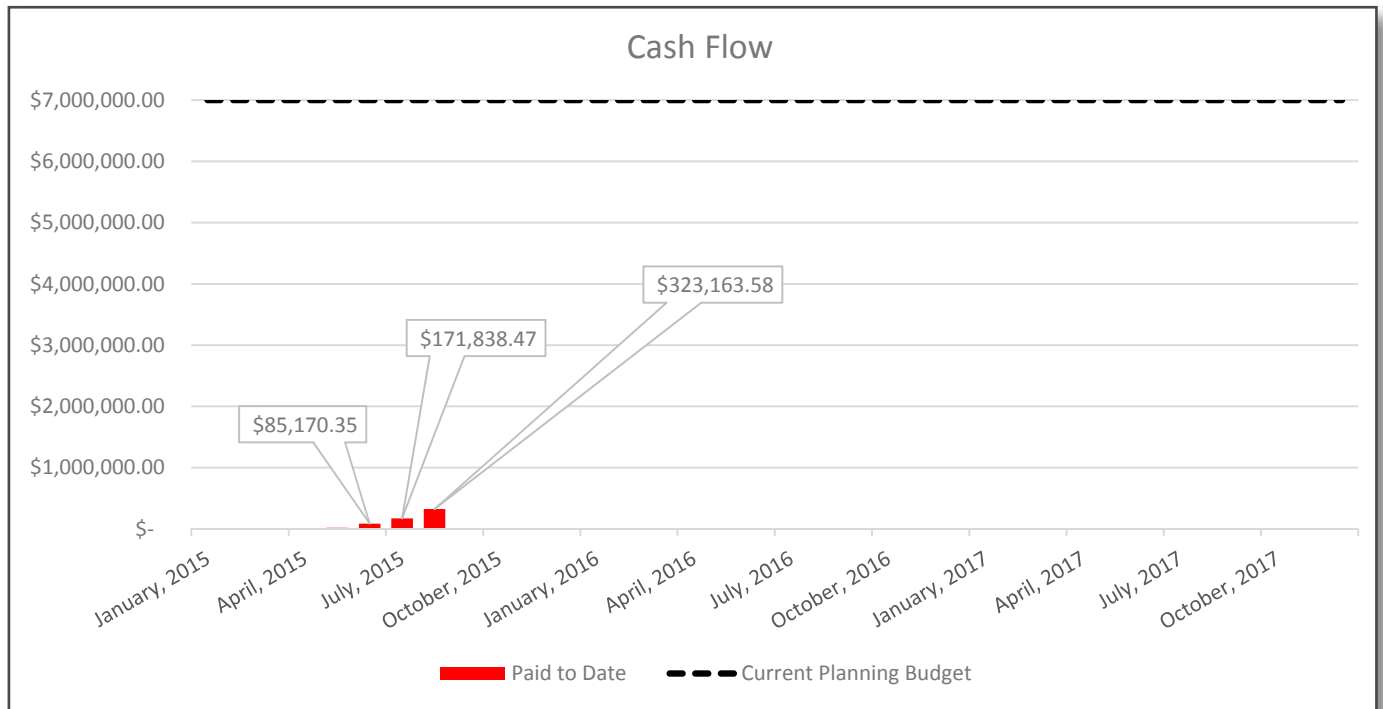
- Safety and security site assessments September 28 through October 2
- Review Federal and State law and policy around school safety
- Update district emergency response plans



## DISTRICT-WIDE IMPROVEMENTS

Q2 2015

This category of projects represents work at all district sites that has been identified over time as improvements that response to life-cycle replacement, upgrades required by code, changes in instructional models, growth in activity participation and obsolescence. Active and upcoming projects under this bond component will be listed below.



### 2015 Improvements Projects:

#### 15008 – Drainage & Play Equipment @ RR, ST, WM

##### Project Details:

Baseball field drainage improvements and play equipment replacement at Rosemont Ridge Middle School  
 Playground drainage and play equipment maintenance and replacement at Stafford Primary School  
 Playground play equipment maintenance and replacement at Willamette

##### Project Status:

The play equipment design has been completed and play equipment has been ordered/delivered to the district  
 The play equipment installation project went through the public bidding process with no acceptable bids received  
 The procurement strategy is being reviewed and the project will likely be bid in late winter or early spring months  
 The field drainage project at Rosemont Ridge has been design, bid and constructed. The project is complete

#### 15009 – Carpet Replacement @ BF, WD, WM, WHS

##### Project Details:

Front office carpet replacement at Boones Ferry Primary School  
 Select classroom and corridor carpet replacement at Inza Wood Middle School  
 Select classroom and corridor carpet replacement at Willamette Primary School  
 Select office carpet replacement at Wilsonville High School

##### Project Status:

All carpet replacement will be complete in time for school to start



## DISTRICT-WIDE IMPROVEMENTS

Q2 2015

### **15010 – Painting @ ST, WM, WHS**

#### **Project Details:**

Exterior painting at Stafford Primary School  
Interior corridor painting at Willamette Primary School  
Select stadium handrail painting at Wilsonville High School

#### **Project Status:**

Public bid process held, low bid contractor refused to sign contract.  
The project is postponed until 2016 to obtain new bids

### **15011 – Select Restroom Renovation @ BC, ST, WLHS**

#### **Project Details:**

Select restroom renovation at Boeckman Creek Primary School  
Select restroom renovation at Stafford Primary School  
Select stadium renovation at West Linn High School

#### **Project Status:**

Restroom renovations at Boeckman Creek and Stafford were completed in-house by the district this summer  
The work at West Linn High School will require a contractor and will occur next summer

### **15012 – Robotics Renovation @ WHS**

#### **Project Details:**

Insulate and add power, heat, and networking to existing metal landscape building

#### **Project Status:**

Design is complete and the project was publicly bid. The construction contract has been executed and the work is scheduled for September and October of this year

### **15013 – Clock System Replacement @ WLHS**

#### **Project Details:**

Replace aging clock and bell system at West Linn High School

#### **Project Status:**

Project is complete

### **15014 – Gym Lighting Replacement @ WHS, WLHS**

#### **Project Details:**

Replace aging, inefficient, main gym lighting systems with modern energy efficient LED light fixtures at both high schools

#### **Project Status:**

Project is complete

### **15015 – Concession/Restroom/Team Room @ RR**

#### **Project Details:**

Construction of a concession/restroom/team room at Rosemont Ridge Middle School

#### **Project Status:**

The design was approved by City of West Linn planning department in July  
The design is complete and has been submitted for building permit  
The public bid process is underway, bids are due September 16, 2015